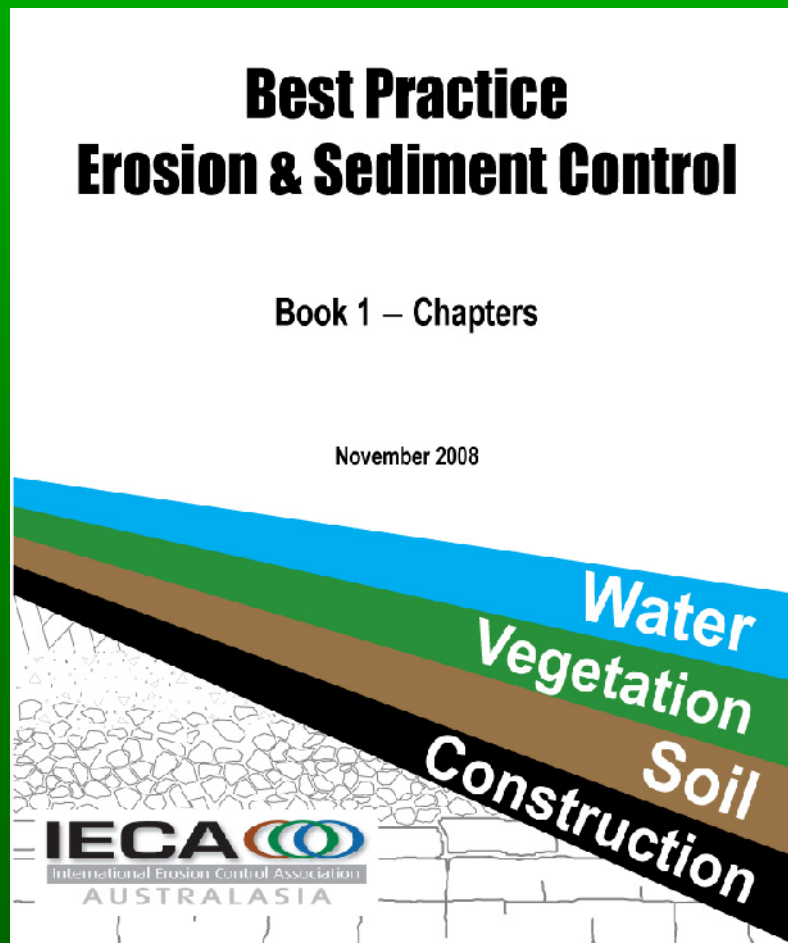


2011
BEST PRACTICE EROSION AND SEDIMENT CONTROL
ROAD SHOW

Registration Brochure



Invitation to Attend

Location	Date	Program
Brisbane	3-4 August and 24 -25 August	2 day event
Gold Coast	9 August	1 day event
Sunshine Coast	11 August	1 day event
Toowoomba	15 August	1 day event

The 2011 Best Practice Erosion and Sediment Control Road Show, organised by the Australasian Chapter of the International Erosion Control Association, and hosted by the Environment Institute of Australia and New Zealand - South East Queensland Division will begin in South East Queensland during the month of August.

The International Erosion Control Association (IECA) has developed their suite of Best Practice Erosion and Sediment Control (BPESC) documents from a national perspective so that the documents will have the flexibility to deal with the wide-ranging climatic conditions found across Australia.

The BPESC documents are not intended to replace existing State documents, rather they act as a supporting design tool in a manner similar to how Engineers Australia's 'Australian Rainfall and Runoff' and 'Australian Runoff Quality' documents support a State's drainage and floodplain management policies and guidelines.

These talks and training courses will be presented by Grant Witheridge, the author of the BPESC document and will also provide an opportunity for people working in the building, construction, and erosion & sediment control industries to familiarise themselves with the design and application tools provided within this recently finalised suite of documents.

The Presenter

Grant Witheridge

All courses are conducted by Grant Witheridge.

Grant is the principal author of the best practice ESC documents, as well as publications such as the revised edition of the Queensland Urban Drainage Manual, Fish Passage at Waterway Crossings, and Brisbane City Council's Natural Channel Design guidelines and creek erosion guidelines.

Grant is a civil engineer with 30 years experience, of which 20 years have been spent within the erosion control industry. Since 1995 Grant has conducted over 300 training courses in erosion and sediment control around the country, which have been attended by more than 5000 people.

ONE DAY TRAINING COURSE

Best Practice Erosion and Sediment Control

Part 1 - Detailed overview of the Best Practice Erosion & Sediment Control documents.

This presentation introduces the 6 books that make up the suite of best practice erosion and sediment control documents, and discusses which books are likely to be relevant to the different professions working within the industry.

The presentation also outlines the important features of each book including the principles of erosion and sediment control; the default soil survey standard; default drainage, erosion and sediment control standards; the various technique selection guides; a stepped procedure for the preparation of plans and associated technical notes; plan and site checklists; and model codes of practice.

A brief overview is provided on the design fact sheets provided in Book 4, and the field support information provided in Books 5 and 6.

The talk ends with a summary of the major lessons learnt over that past 10 years as the industry adapts the principles of erosion and sediment control to the different climatic regions of Australia. This latter session proposes that even though the basic principles of ESC have not changed over the years, the application of these principles have changed.

Part 2 - Drainage and Erosion Control Techniques

Discussion on temporary drainage control measures includes: principles of drainage control during the construction phase, purpose of catch drains and other temporary drainage control measures.

Discussion on temporary erosion control measures includes: principles of erosion control, use of mulch for erosion control, erosion control blankets, surface roughening, managing dispersive soils, and the use of temporary and permanent revegetation for short and long-term erosion control.

Part 3 - Sediment Control Techniques

Discussion topics include: entry/exit sediment control practices, management of stockpiles, sediment fences, mulch filter berms, grass filter strips, kerb inlet protection systems, sediment traps adjacent pipe inlets and outlets, sediment traps in table drains, rock filter dams, sediment weirs and sediment basins.

Part 4 - De-Watering Sediment Control and Instream Work Practices

Discussion on temporary de-watering sediment control practices includes: bag filters, cartridge filters, filter bags, filter fences, filter ponds, filter tube dams, grass filter beds, settling ponds and stilling ponds.

Discussion on temporary instream sediment control techniques includes: rock filter dams, sediment filter cages, sediment weirs, filter tube dams, and modular sediment barriers.

TWO DAY TRAINING COURSE

(Brisbane only)

Day 1 – Best Practice Erosion and Sediment Control

As for 1-day training course (see above)

Day 2 – Sizing Erosion and Sediment Control Measures

Part 1 - Sizing Temporary Drainage Control Measures

This advanced course focuses on the use of the Book 4 fact sheets for the design (sizing) of various drainage, erosion and sediment control techniques. Discussion topics include the sizing of temporary catch drains, drainage chutes, check dams, diversion channels, flow diversion banks and level spreaders.

Part 2 - Sizing Type 1 & 2 Sediment Control Measures

This session focuses on the use of the Book 4 fact sheets for the design of rock filter dams, sediment weirs and sediment basins. The design of these Type 1 and Type 2 sediment control devices is demonstrated via some of the worked examples presented with the fact sheets.

Part 3 - Preparing Erosion and Sediment Control Plans

The session outlines the stepped procedure presented in Book 1, Chapter 5, for the preparation of Erosion & Sediment Control Plans. Information is also provided on the various design tools presented within the Best Practice documents that can assist designers in the preparation of these plans.

Part 4 - Workshop on the Preparation of Erosion and Sediment Control Plans

This final session is dedicated to a series of interactive workshops on the preparation of ESCPs for various construction sites typically including a factory site and road construction.

BEST PRACTICE EROSION AND SEDIMENT CONTROL

REGISTRATION FORM

Location	Date	Cost	Quantity	Total
Brisbane Ibis Brisbane 27-35 Turbot St Brisbane	3-4 August 2 day training 8.30am-5pm each day	\$400 member	FULLY BOOKED	
		\$450 non-member		
	24 - 25 August 2 day training 8.30am-5pm each day	\$400 member		
		\$450 non-member		
Gold Coast Vibe Hotel Gold Coast 42 Ferny Ave Surfers Paradise	9 August 1 day training 8.30am-5pm	\$300 member		
		\$350 non-member		
Sunshine Coast Crowne Plaza, Pelican Waters 38 Mahogany Drv Pelican Waters	11 August 1 day training 8.30am-5pm	\$300 member		
		\$350 non-member		
Toowoomba Burke & Wills Hotel 554 Ruthven St Toowoomba	15 August 1 day training 8.30am-5pm	\$300 member		
		\$350 non-member		

Payment Options

All prices shown include GST. A tax invoice will be issued upon receipt of registration form. All cheques should be made payable to IECA Australasia. Payment can also be made by direct debit, Visa, or MasterCard.

Please complete the payment details below:

Cheque

(Please make cheques payable to IECA Australasia)

Direct Deposit

If you wish to make payment by direct deposit, bank deposit details will be provided on your tax invoice.

Credit Card Payment

VISA MasterCard

Credit Card No.

--	--	--	--	--	--	--	--	--	--	--	--	--	--	--	--	--	--	--	--

Expiry Date

--	--	--	--	--	--

Name on Card _____

Signature _____

Total Amount Charged \$ _____ Full payment must be received within 30 days of receipt of the invoice.

Title: _____ First Name: _____ Surname: _____

Organisation: _____

Position: _____

Address: _____

Suburb: _____ State: _____ Postcode: _____

Telephone: _____ Fax: _____ Mobile: _____

Email: _____

SEND TO: EMAIL: admin@austieca.com.au, FAX: 02 4677 0902 POST: IECA, PO Box 33, Picton, NSW 2571